

Download Program V1.2x Operation Manual

- Overview

This program is an application program to download the firmware to JCM products.

- Applicable JCM Products

- DBV-200
- DBV-30X
- WBA-1Mb
- WBA-4Mb
- UBA-10/11
- EBA-3x-(SD3)
- TAIKO

- Applicable OS

- Windows 98, 2000, XP

- Operation Procedure

1. Install the download program

Unzip two files (Download Program Ver.1.2x exe and wba_download_config.txt) from the zip file and copy those files to your PC. *

* You can save the files in any folder. However, two files must be saved in the same folder.

2. Download the file to the Flash Memory

The following download procedures explain WBA as an example. For other models, refer to the "Setting List".

- Setting Lists

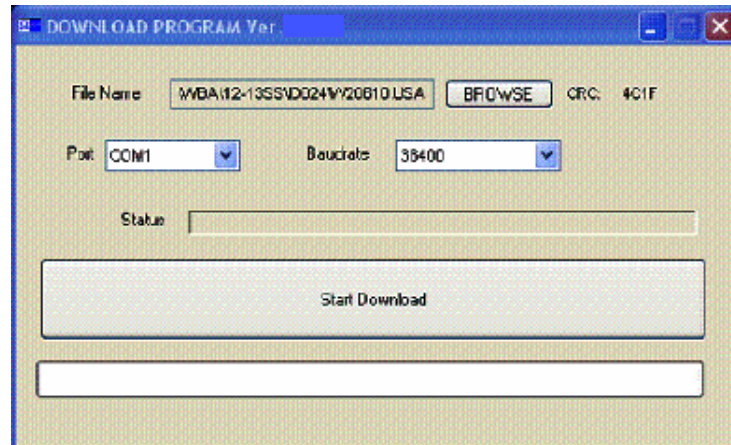
Model	Baud Rate (kbps)	DIP Switch (ON)
DBV-200	38.4	Bank1: 2, Bank2: 1~6
DBV-30X	38.4	Bank1: 1,6,7,8 (RED)
WBA-1Mb	19.2	6,7,8
WBA-4Mb	38.4	1,6,7,8
UBA-10/11	38.4	1,6,7,8
EBA-3x-(SD3)	38.4	Bank1: 1,5,6,7,8 Bank2: 1 (with SD3 Stacker)
TAIKO	38.4	1,7,8

1) Set the WBA unit's DIP Switches No.1, 6, 7 and 8 ON.

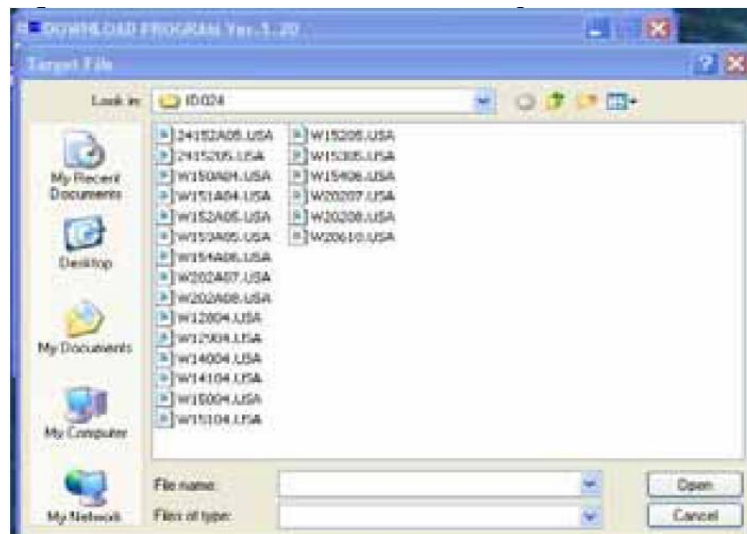
2) Connect the power supply unit with MIB-232 Adapter to WBA, and connect MIB-232 to PC, and then, turn on the power supply.

Download Program V1.2x Operation Manual

3) Double-click the Download Program. Then the following window will appear.

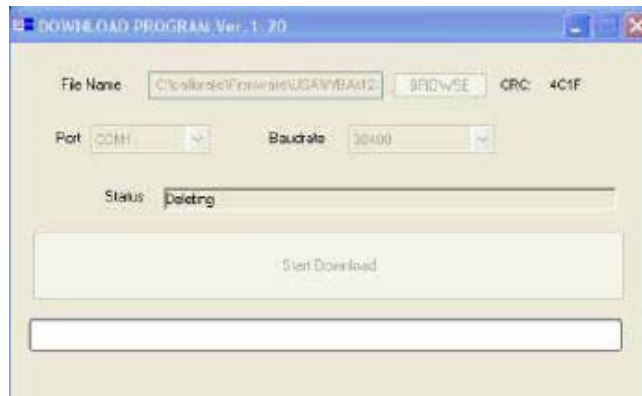


4) Click the [Browse] button and select the file you want to download.



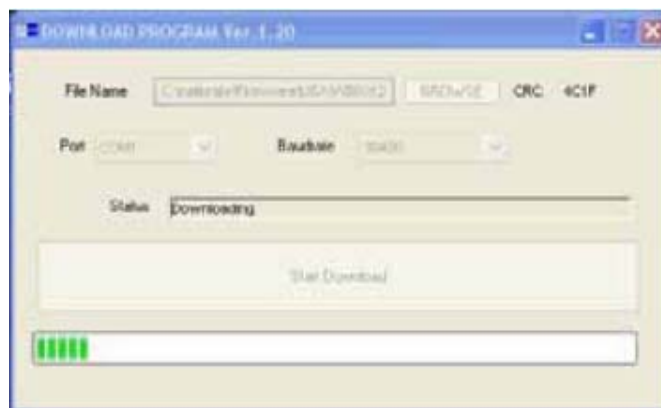
5) Check the COM Port and Baud Rate setting.
(Ex. WBA DIP switches No.1, 6, 7 and 8 is ON = 38.4 kbps).

6) Click the [Start Download] button to start downloading.
(Status 1) Delete the files in the Flash Memory.
(“Deleting” is displayed in the Status bar)



Download Program V1.2x Operation Manual

(Status 2) The progress report is displayed in the progress bar while downloading.
(“Downloading” is displayed in the Status bar.)



When downloading is successfully completed, the following pop up windows will be displayed. Click [OK] button and close the Download Program.

